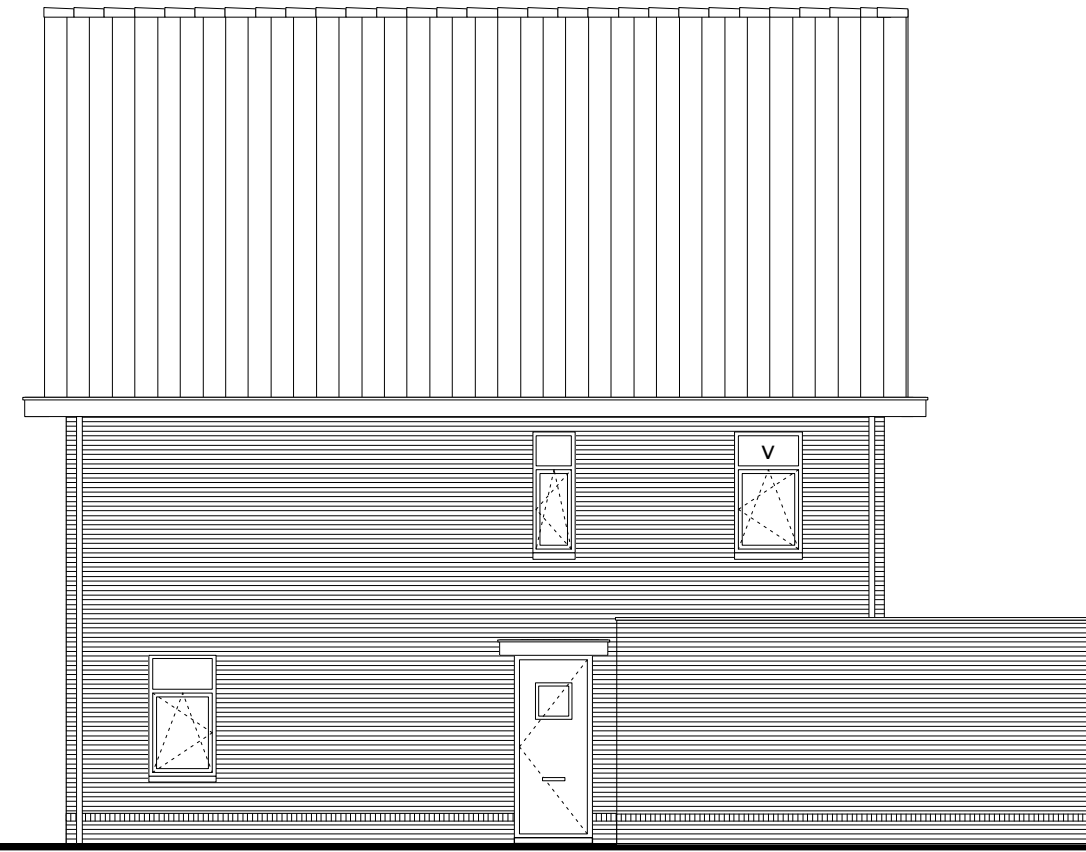
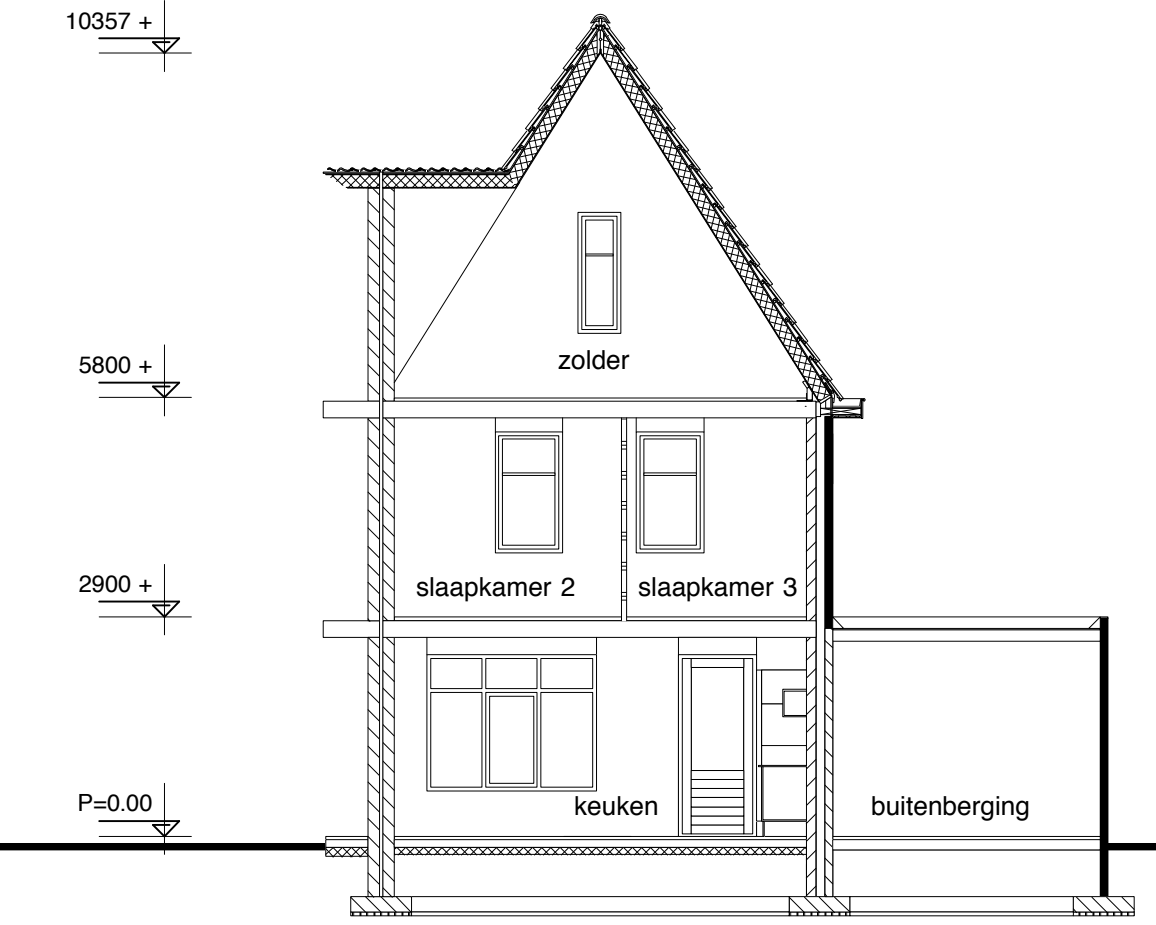




-type B1- -type A1-
voorgevel



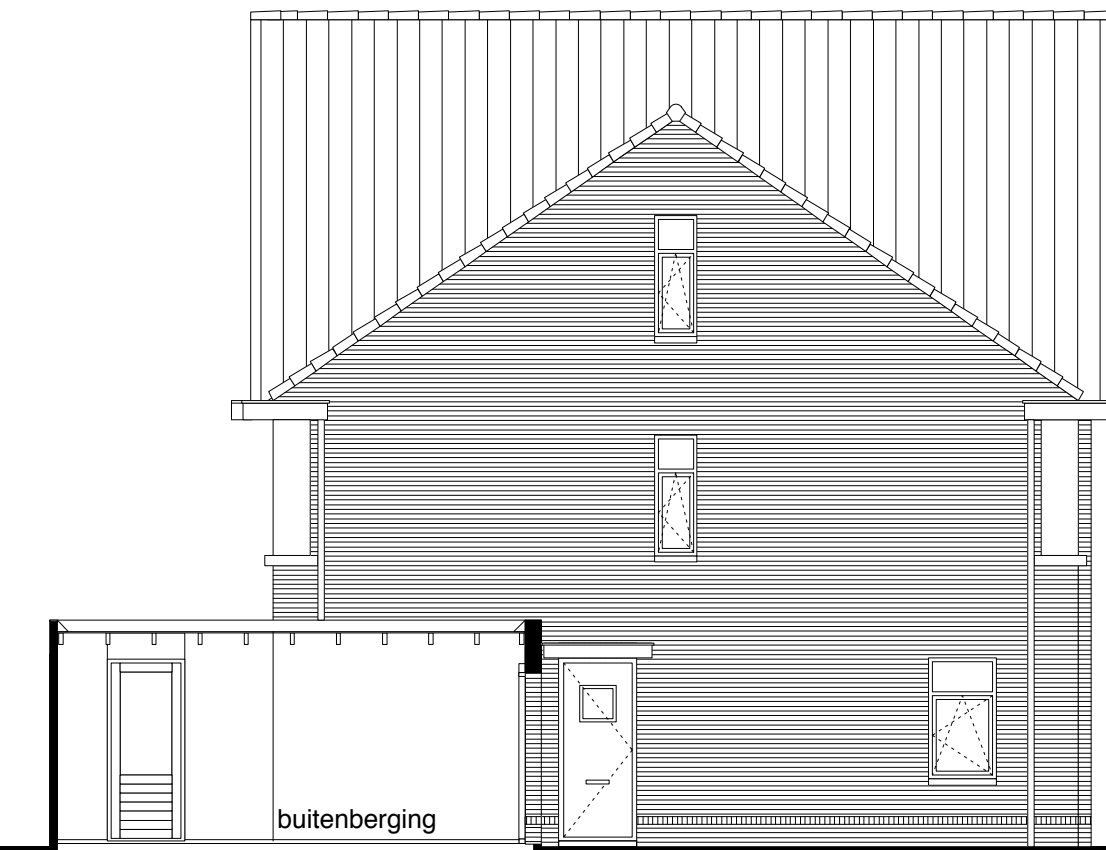
-type A1-
rechtergevel



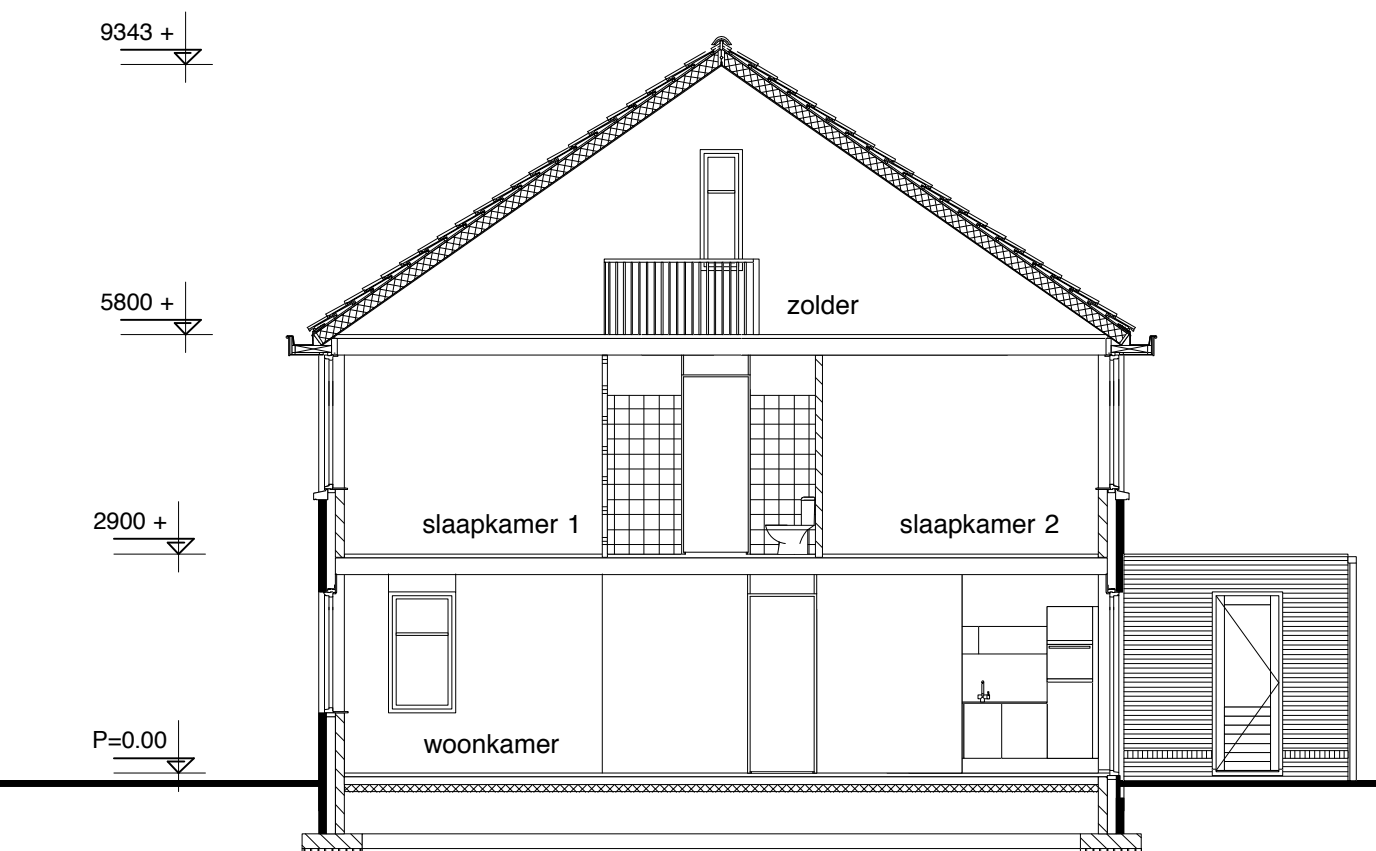
doorsnede A-A (type A1)



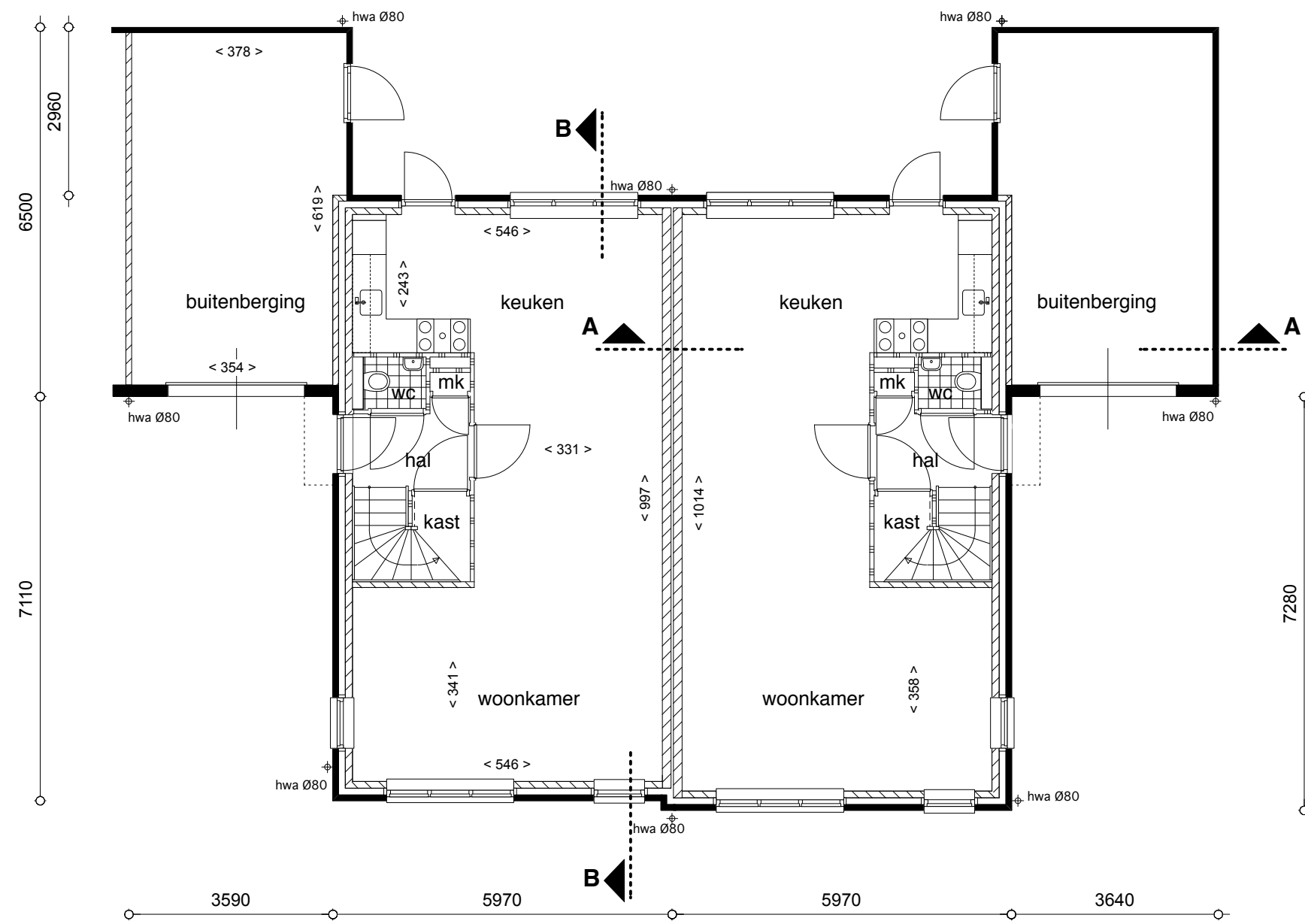
-type A1- -type B1-
achtergevel



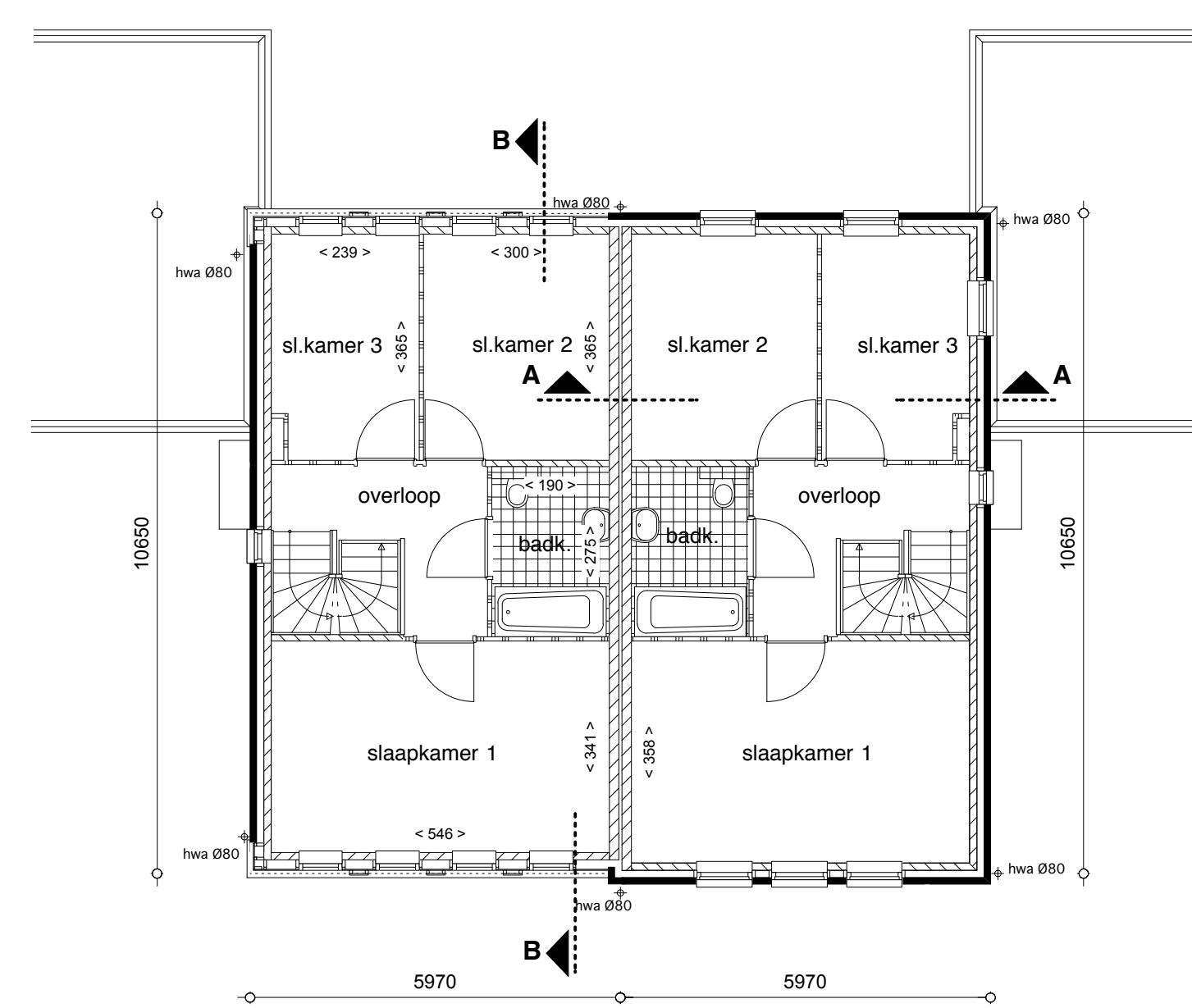
-type B1-
linkergevel



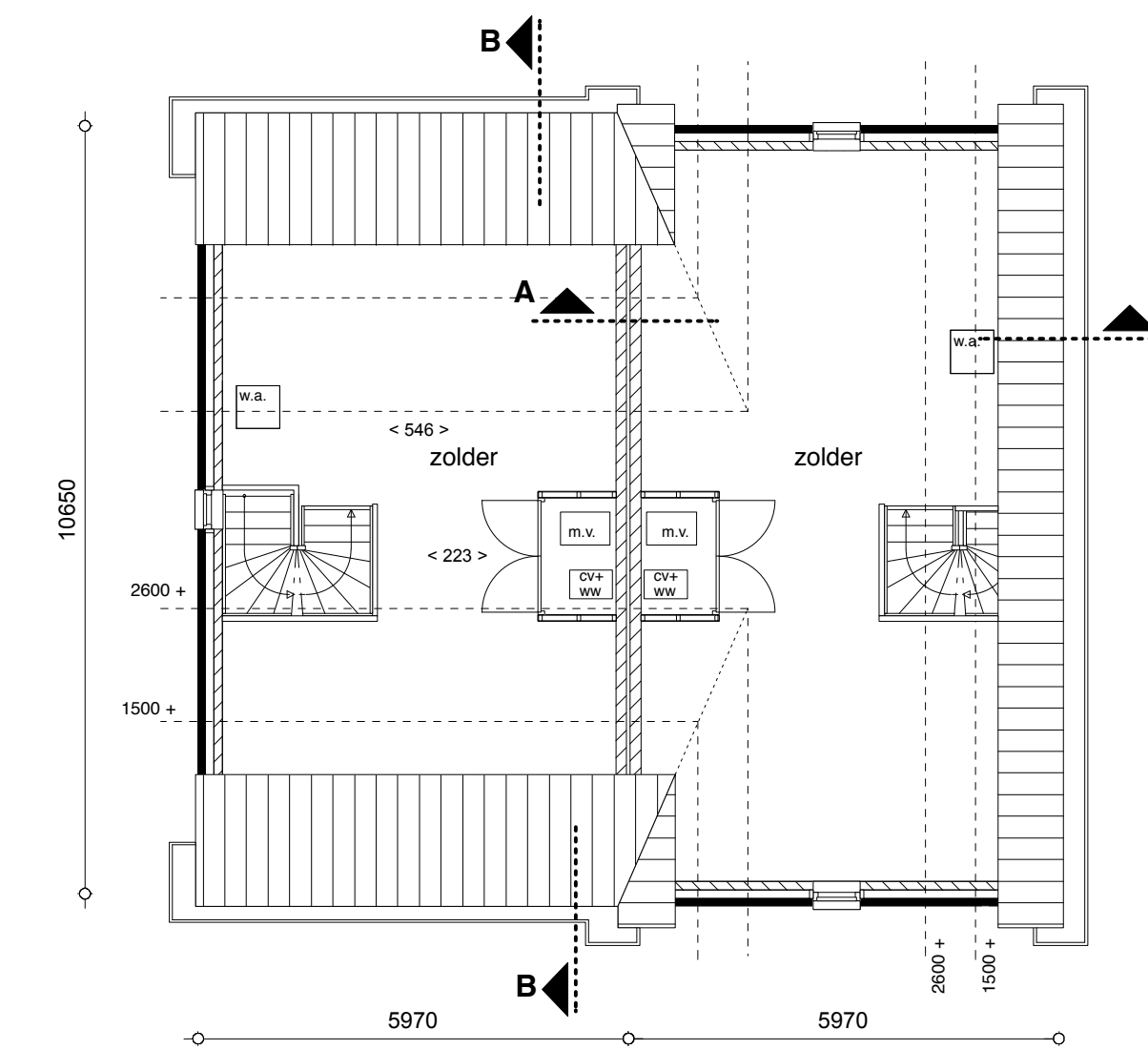
doorsnede B-B (type B1)



-type B1- -type A1-
begangrond



-type B1- -type A1-
1e verdieping



-type B1- -type A1-
2e verdieping

RENVOOI	
	gevelsteen, 100mm.
	kalkzandsteen
	betonvloeren
	isolatie
	niet dragende lichte scheidingwand, 70mm
	h.w.a. hemelwater afvoer
	c.v.+w.w. centrale verwarming + warm water
	m.v. mechanische ventilatie
	v. ventilatorrooster
	w.a. wasautomaat
	w.d. watercloset
	w.c. watercloset

kavel 33 + 34



wjz. D:		afm: A1	proj.no.: 10.03.10
wjz. C:		tek.no.:	ggt: RK
wjz. B:			sch.aak: 1 : 100
wjz. A: Diverse aanpassingen	26-01-16	VM-04	datum: 13-01-16

project:	6 woningen "Vilgert" te Velden
i.o.v.:	BPD
ond.:	Verkooptekening 1/3

type Markies